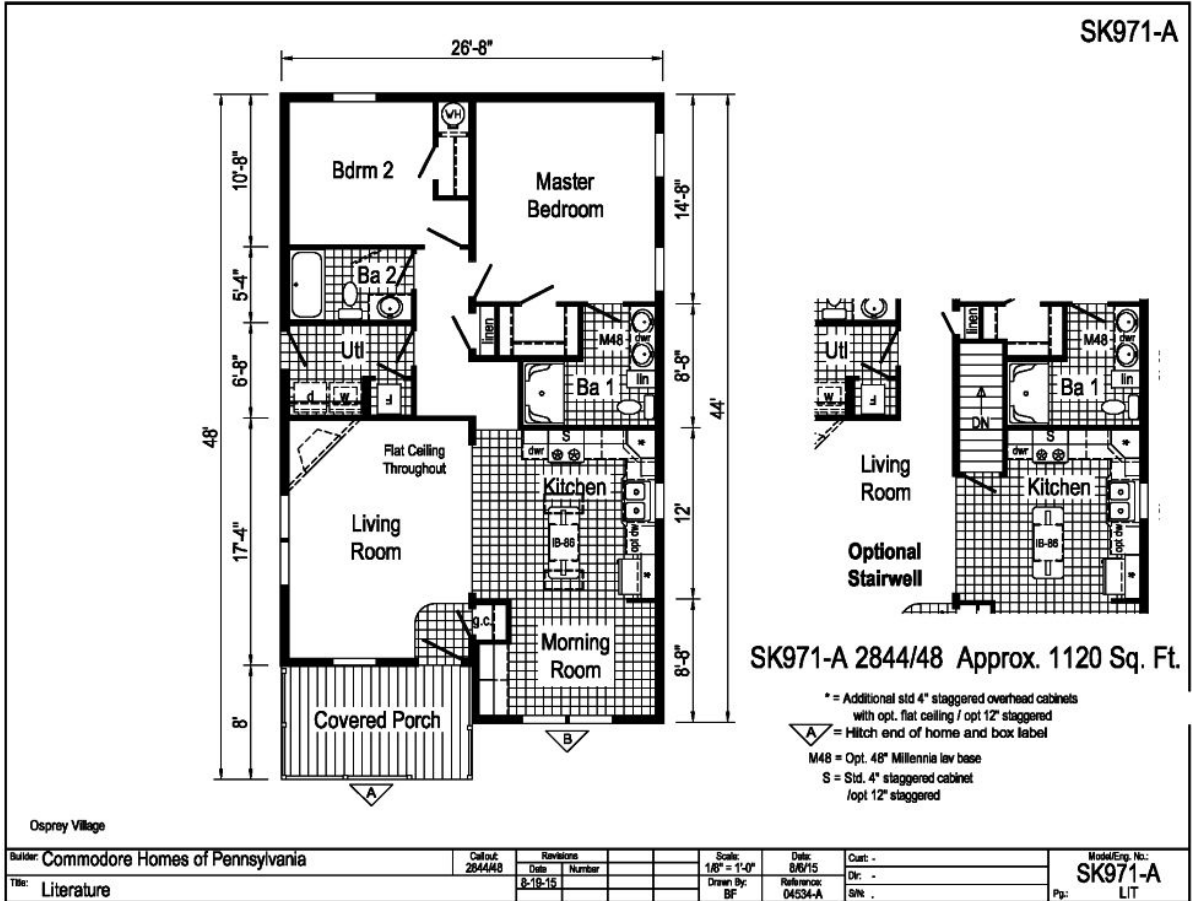


PRINTABLE INFO SHEET

Series: Osprey Cove, LLC
 Model: SK971A



About This Model

Style: Ranch / Bedrooms: 2 / Bathrooms: 2 / Square Feet: 1120

CUSTOMER CONTACT

Notes:

PRINTABLE INFO SHEET

Series: Osprey Cove, LLC

Model: SK971A



Standards & Features

INTERIOR

- Primed Smooth Drywall Throughout
- Cathedral Ceiling Throughout
- Flat Ceiling Throughout in SK923A, SK953A, SK928A, and SK928A
- Stipple Ceiling
- 7'6" Sidewall Height
- 8'0" Sidewall Height in SK923A, SK953A, SK928A, and SK928A
- Langford 5-Arm Brushed Nickel Dining Room Light
- Alabaster Glass Nook Light
- Glass Light Shades Throughout
- Pre-Hung Door Jambs
- Pinned Mortise Hinges
- 30" Interior 2-Panel White Passage Doors
- Metal Interior Passage Sets
- Floor Mount Door Stops
- Smoke Detectors with Battery Back-Up
- Wire Shelving in Guest Closet
- Designer-Coordinated Window Treatments

EXTERIOR

- White Aluminum Lantern Light at Front and Rear Door
- One GFI-Protected Exterior Receptacle
- Vinyl Dutch Lap Siding
- OSB Sheathing Under Siding
- 3/12 Pitch Shingle Roof with 10" Fixed Eaves
- 5/12 Pitch Roof with Architectural Shingles on SK923A, SK953A, SK958A, and SK928A
- Ridgevent Roof Ventilation System
- 38x82 9-Panel Steel Front Door with Deadbolt Lock

EXTERIOR (continued)

- 6-Panel InSwing Rear Door
- Vinyl Insulated Windows with Grids, Low-E Glass, and Wood Sills
- 12" Raised Panel Shutters on Front Door Side

CONSTRUCTION

- *Energy Star Qualified on Selected Models
- 2x6 Transverse Floor System on 16" Centers**
- **2x6 Exterior Walls on 16" Centers
- 30# Roof Load
- Recessed Frame Design

KITCHEN

- 30" Gas Range
- Power Range Hood with Light
- 18 Cubic Foot, No-Frost Refrigerator
- Decorative Vinyl Wall Coverings
- Stainless Steel Sink-33x19x7
- Empire High Rise Brushed Nickel Faucet

BATHS

- 60" One-Piece Fiberglass Tub/Showers
- One-Piece Fiberglass Shower With Glass Door in Glamour Baths
- Fiberglass Tub in Glamour Baths
- Framed Lav Mirrors in Master Bath
- Deluxe Overdrape at 60" Tubs
- 1.6 Gallon Per Flush Elongated Toilets
- China Stool, Tank and Lid
- China Sinks with Pop-Up Drains
- Lighted Vent Fan in Each Bath
- Empire Brushed Nickel Faucets
- Langford 2-Arm Vanity Light in All Baths

CUSTOMER CONTACT

Notes:

PRINTABLE INFO SHEET

Series: Osprey Cove, LLC

Model: SK971A



Standards & Features (continued)

CABINETRY

Classic Craft Custom Georgetown Oak Cabinetry (KCMA Approved)
Mission Cabinet Doors
Contemporary Cabinet Hardware
Concealed Cabinet Hinges
Hardwood Crown Moulding on Overhead Cabinets and Hardwood Cabinet Stiles
30" Lined Staggered Overhead Cabinets
Under Cabinet Moulding
Adjustable Shelves in Overhead Cabinets
Deluxe Roller Guide Drawer System
Drawer Over Door Base Cabinets
Extended Sink Cabinet
Tip-Out Trays at Kitchen Sink
Adjustable Center Shelf in Base Cabinets
Laminate Countertops with Laminate Crescent Edge
4" Laminate Backsplash
Base Shelf in Vanities
33" High Vanities

UTILITIES

Washer and Dryer Area with a Wire Shelf
100 AMP Electrical Service
Plumb and Wire for Washer including Quarter Turn Valve
Wire and Vent for Dryer
40 Gallon Electric Water Heater with Pan
Auto Ignition Gas Furnace:
#M1-MB077ABW – 56 And Under
#M1-MB090ABW – 60 And Over
White 2-Panel Furnace Door
Air Exchanger System for Furnace

UTILITIES (continued)

Perimeter Heat System
Aluminum Heat Ducts with In-Floor Cross Over
Copper Wiring Throughout
Main Water Line Shut-Off Valve
Water Shut-Off Valves Where Accessible
One Exterior Faucet
Programmable Thermostat

FLOORING

Choice of various Styles of SHAW Textured Carpet with R2X Soil and Stain Resistance:
- Standard Soft Sensations, Adaptation or Natural Weave Through out with Choice of 8 Colors
- All Standard Carpet is 25 oz Nylon
- Upgrade Styles Available with over 15 Color Selections.
Rebond Carpet Pad with Tackstrip Carpet Installation
Vinyl LuxFlor Floor Coverings, featuring Congoleum including Foyer Entry

BEDROOMS

Ceiling Lights
Egress Window in Each Bedroom
Wire Shelving in Wardrobes
Switched Light in All Walk-In Closets

INSULATION

R-22 Fiberglass Insulation in Floor
R-19 Fiberglass Insulation in Walls
R-31 Avg. Blown Insulation in Ceiling

ENERGY EFFICIENT STANDARDS

Low –E Vinyl Insulated Windows
Low –E Vinyl Insulated Windows

CUSTOMER CONTACT

Notes:

PRINTABLE INFO SHEET

Series: Osprey Cove, LLC

Model: SK971A



Standards & Features (continued)

ENERGY EFFICIENT STANDARDS (continued)

R-22 Fiberglass Insulation in Floor, R-19

Fiberglass Insulation in Walls and R-31

Avg. Blown Insulation in Ceiling

*NOTE: Energy Star qualified Home is not available in Total Electric Homes

**NOTE: Spacing for Framing Members may vary due to Design Requirements

*Select models can be ENERGY STAR Qualified and be ENERGY STAR labeled after undergoing a field site inspection conducted by a manufacturer's field representative following site installation by our Authorized Independent Retailers.

CUSTOMER CONTACT

Notes:
